

These are the colors of our collection.

The shape we have is indicated for each color.
Some are limited, the colors have an L behind it.
Are you in doubt? Please let us know. We are happy to give
advice and we can always make photos.

voor altijd
in het hart



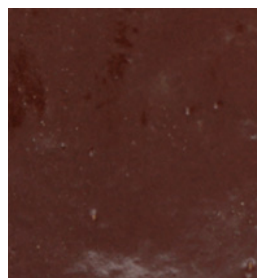
citraengeel: mini square



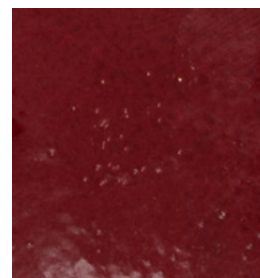
okergeel: hexagon



karamel: hexagon



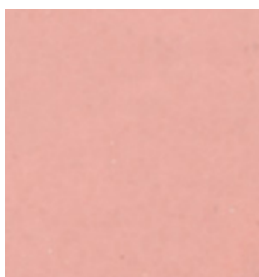
bos (L): square & mini



dieprood (L): hexagon



sienna: square &
hexagon



roze: square & hexagon



pastelroze: hexagon



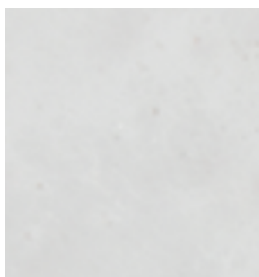
nude: square, diamond,
hexagon, round & mini
square



offwhite: square,
diamond & hexagon



wit: square, hexagon &
mini square, mini circle



witblauw (L): square



pastelblauw:
hexagon



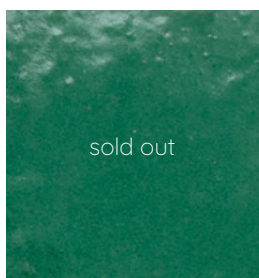
aquamarijn (L):
square



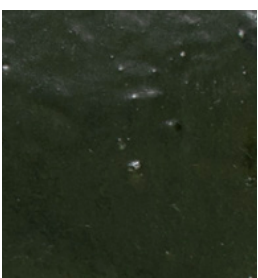
lavendel (L): square



diepblauw: hexagon



diepgroen (L): hexagon



mosgroen (L): square



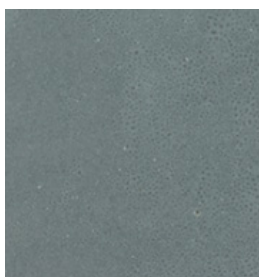
pistache: square,
diamond & hexagon



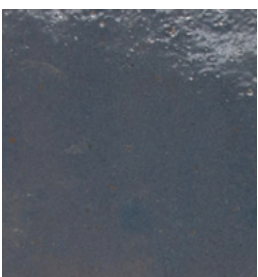
jade: square, hexagon
& mini



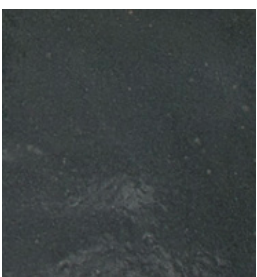
muis: mini



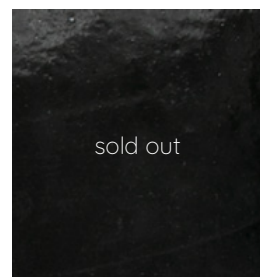
beton (L):
hexagon



paarsgrijs (L): hexagon



antraciet (L): square



zwart: hexagon