

These are the colors of our collection.

The shape we have is indicated for each color.

Some are limited, this has an L behind it.

Are you in doubt? Please let us know.

We are happy to give advice and we can always make photos.

voor altijd  
*in het hapt*



wit: square, hexagon & mini



offwhite: square & hexagon



nude: square, hexagon, round & mini



pastelroze: hexagon



sienna: square & hexagon



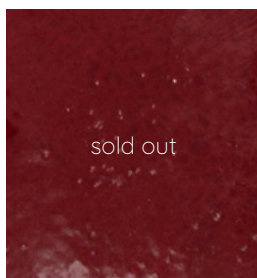
jade: square, hexagon & mini



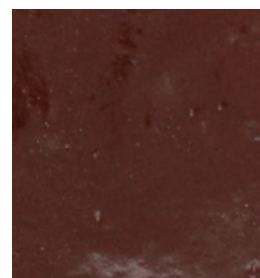
okergeel: hexagon  
(back in stock fall '24)



karamel: hexagon



dieprood: hexagon



bos (L): square & mini



pastelblauw: hexagon



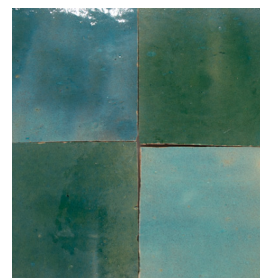
aquamarijn (L): square



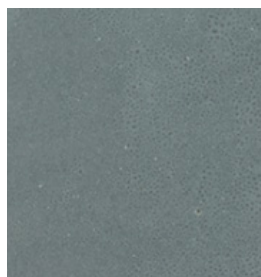
mint (L): hexagon



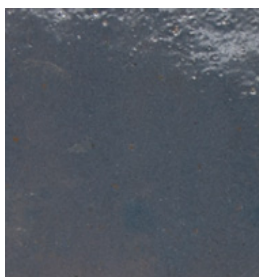
zeeblauw (L): square & mini



ocean: hexagon



beton (L): hexagon



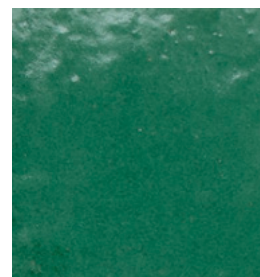
paarsgrijs (L): hexagon



lavendel (L): square



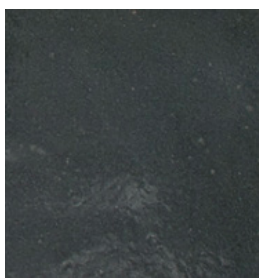
diepblauw: hexagon



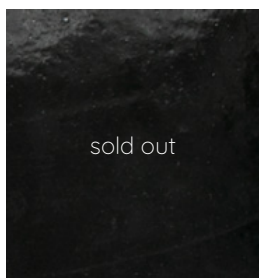
diepgroen: hexagon



muis: mini



antraciet (L): square



zwart: hexagon



mosgroen (L): square



pistache: square & hexagon